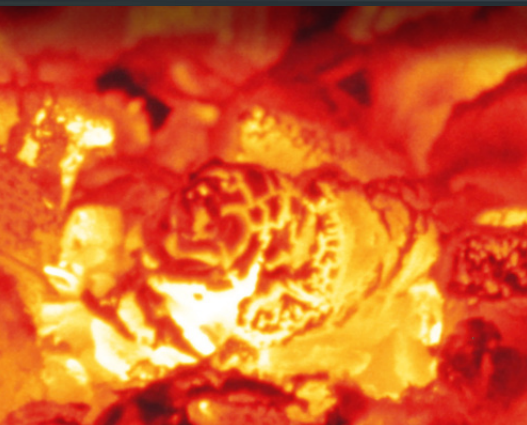
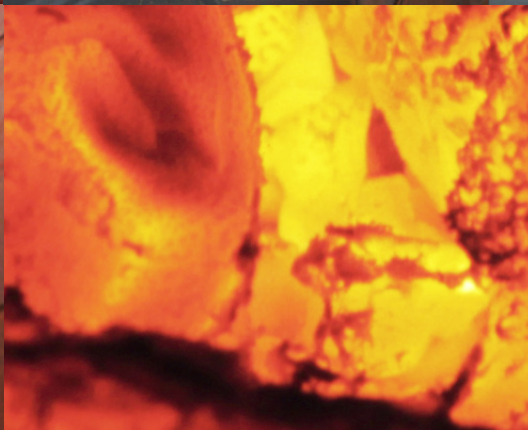


CHAMPIONDOOR®



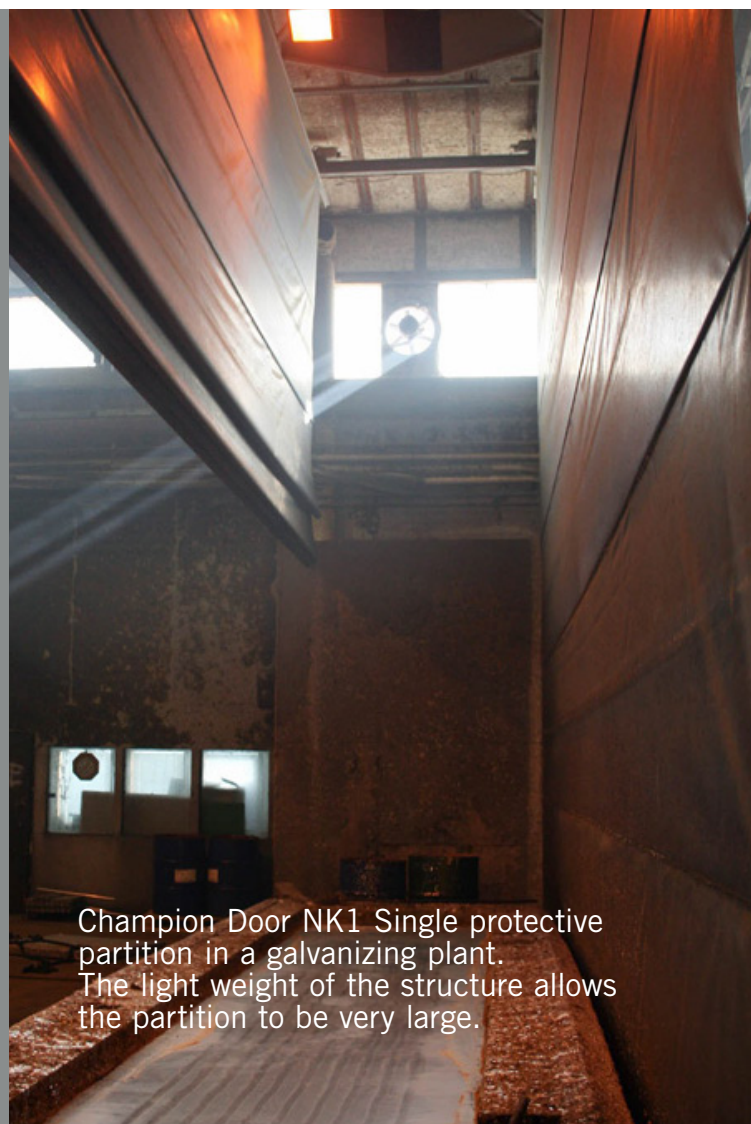
NK1 Single
Heat-resistant
factory
partitions



Champion Door NK1 Single partition wall with heat-resistant fabric is extremely suitable for industrial buildings where hot molten materials like zinc are processed. The heat-resistant material of the partitions can also be used as protection from welding or flame cutting. The NK1 Single partitions are always built to suit the location. Because of the aluminium frame, the construction is lightweight, yet durable. The light weight allows the partitions to be manufactured in very large sizes.

TECHNICAL INFORMATION

- Upward-folding 1-ply partition.
- Raised with lifting belts (manufactured and tested according to the EN 1492-1 standard).
- Horizontal stiffeners made of aluminium.
- Operated by an electric motor equipped with built-in brakes.
- Electricity feed with 16 A 3-phase plug, control voltage 24 V (transformer in control panel).
- Control panel with a 3-button switch, ready for various additional accessories, such as impulse and radio control, pull switch, photoelectric cells, radar control, impact sensor at lower edge.
- Silicone fabric reinforced with glass fibre, heat-resistant (for example, resists splashes of hot zinc), weight 700 g/m².
- Complies with the EU Machinery Directive and all the other applicable regulations.



Champion Door NK1 Single protective partition in a galvanizing plant. The light weight of the structure allows the partition to be very large.

CHAMPIONDOOR®

Champion Door Oy

Hopeatie 2, FI-85500 Nivala, FINLAND

Tel. + 358 8 445 8800

Fax + 358 8 442 956

info@championdoor.com

www.championdoor.com